

# FADAL

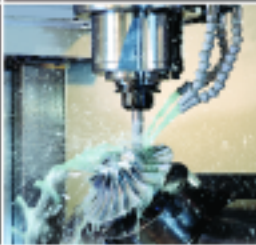
---



## VMC 8030

Vertical Machining Center

GE Fanuc 18i-MB5 Digital CNC



## FADAL MACHINING CENTERS

Blue Technologies



## SPECIFICATIONS

General	Imperial	Metric
FLOOR TO TABLE SURFACE	36"	914.4 mm
MACHINE WEIGHT	18,000 lbs.	8,165 kg
CONSTRUCTION	Cast Iron Box Way X/Y/Z	
<b>Table</b>		
TABLE SIZE	82.5" x 30"	2,095.5 mm x 762 mm
T-SLOTS (NO. x WIDTH x SPAN)	5 x .709" x 5.512"	5 x 18 mm x 140 mm
CUTTING FEED RATE (X/Y/Z)	400 ipm max	10.16 mpm max
RAPID TRAVEL RATE (X/Y/Z)	400 ipm	10.16 mpm
MAX. WEIGHT ON TABLE	3,751 lbs. <sup>c</sup>	1,701 kg <sup>c</sup>
BALL SCREW SIZE (X/Y/Z)	1.75" Dia. (X/Y) 1.5" Dia. (Z)	44.45 mm Dia. (X/Y) 38.1 mm Dia. (Z)
LONGITUDINAL (X AXIS)	80"	2,032 mm
LATITUDINAL (Y AXIS)	30"	762 mm
VERTICAL (Z AXIS)	30"	762 mm
SPINDLE NOSE TO TABLE	5.5"-35.5"	137.7 mm - 901.7 mm
SPINDLE CENTER TO COLUMN WAYS	30"	762 mm
<b>Accuracy</b>		
AXIS POSITIONING**	+/- .0004"	+/- .010 mm
AXIS REPEATABILITY**	+/- .0002"	+/- .005 mm
<b>Spindle</b>		
POWER TRANSFER	Automatic Mechanical 2 speed VECTOR Drive	
SPINDLE SPEED	10-10,000 RPM	
SPINDLE ORIENTATION	Electromechanical	
SPINDLE TAPER	No. 40	
<b>Tools</b>		
ATC, NUMBER OF TOOLS	21	
ATC, TOOL SELECTION	Random / Bi-directional	
MAX. TOOL DIAMETER	3"	76.2 mm
(WITHOUT ADJACENT TOOLS)	4.5"	114.3 mm
MAX. TOOL LENGTH	15"	381 mm
MAX. TOOL WEIGHT	15 lbs.	6.8 kg
<b>Motor</b>		
SPINDLE DRIVE MOTOR	AC, VECTOR Drive	
HORSEPOWER	14.7 HP / 20.1 HP*	11 kW / 17.5 kW*
TORQUE	103 ft.-lbs. / 169 ft.-lbs.*	140 Nm / 229 Nm*
OPT. VERY HIGH TORQUE SPINDLE	29.8 HP* / 209 ft.-lbs*	22.2 kW* / 283 Nm*
AXIS DRIVE MOTOR (X/Y/Z)	AC, 3,800 lbs.* thrust	AC, 1,724 kg* thrust
<b>Miscellaneous</b>		
AIR PRESSURE REQUIREMENT	80-120 PSI, 15 SCFM (Momentary)	5.5-8.3 Bar, .42m <sup>3</sup> /min (Momentary)
POWER REQUIREMENT (3-Phase)	76 A @ 230 VAC	
SINGLE PHASE	Not Available	
COOL POWER	Spindle, Y Ballscrew	

<sup>c</sup> Evenly Distributed Weight

\* Peak

\*\* All accuracies are quoted at 68°F.

Fadal reserves the right to change standard and optional machine accessories.

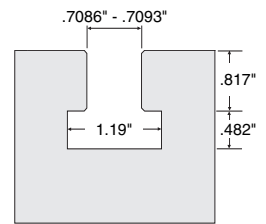
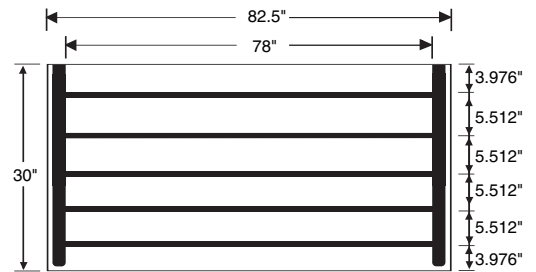
Extended column add 8" to height

Continuous equivalent A-weighted sound pressure at workstation is 77 db(A) or less during normal cutting operations.

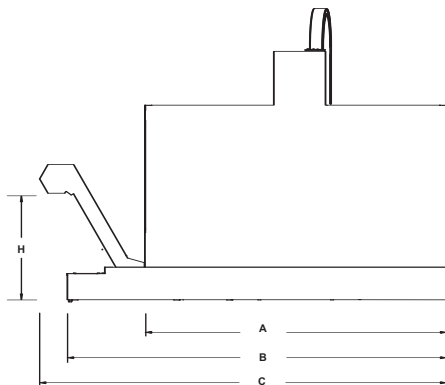
## Options

- 30-Position ATC (CAT or BT)
- 24-Position DATC (CAT or BT)
- Spindle Options
  - 10,000 RPM Very High Torque
  - 10,000 RPM Air/Oil Spindle
  - 15,000 RPM Air/Oil Spindle
- Chip Conveyor System
- Chip Conveyor System with Coolant Wash Down
- Ship Machine Un-Caulked
- Auto Aim Servo Coolant (Uses Spider Cool System)
- 480 Volt - 3 Phase Transformer
- Additional Work Light
- Expanded Memory Levels
  - 1280 Meter Memory (490K)
  - 2560 Meter Memory (980K)
  - 5120 Meter Memory (1960K)
  - 512 Mb Flashcard
- Data Server (Includes High Speed Ethernet)
- Tool Offset - 499 Pairs or 999 Pairs
- Stored Stroke Check Limit before Move
- Circle Radius (9 Digits)
- Polar Coordinate Interpolation
- 300 Work Piece Coordinates
- Machine Time Stamp Function
- Conical Spiral Interpolation
- Registered Programs 400 or 1000
- Mold 3
- Mold 5 (RISC Server, HPCC, Data Server)
- Heidenhain Glass Scales (Z-Axis)
- Renishaw Touch Probes
  - TS-27R Tool Setter Probe
  - MP-12 Probe System
- Rotary Products
  - VH-165 mm
  - VH-175 mm
  - VH-225 mm
  - VH-275 mm
  - TR-165 mm (5-Axis)
  - V-300 mm
  - V-400 mm
  - Rotary Accessories
- Midaco Pallet Changer
- Tooling Packages
  - (11) Tool Starter Package
  - (20) Tool Premium Package
  - Tooling Certificates

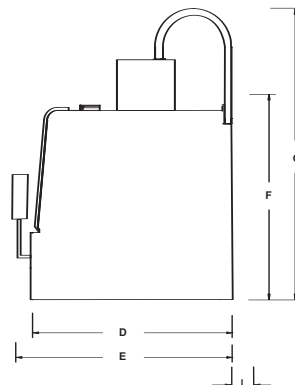
## VMC 8030 TABLE DIMENSIONS



## T-SLOT



Front View



Side View

## VMC 8030 DIMENSIONS

A	209	F	112
B	240	G	129
C	252	H	41
D	97	I	18
E	120-141		

[www.fadal.com](http://www.fadal.com)



Fadal Machining Centers, LLC

20701 Plummer Street, Chatsworth CA 91311 USA  
Telephone (818) 407-1400 • FAX (818) 407-0020